

# From Magic Bullets to Structural Competency:

## White Race as Social Determinant of the Opioid Crisis

*Helena Hansen, MD, Ph.D.*

*Professor of Psychiatry*

*UCLA David Geffen School of Medicine*

*\*no financial relationships to disclose\**

# Rising morbidity and mortality in midlife among white non-Hispanic Americans in the 21st century

Anne Case<sup>1</sup> and Angus Deaton<sup>1</sup>

Woodrow Wilson School of Public

Contributed by Angus Deaton, Sep

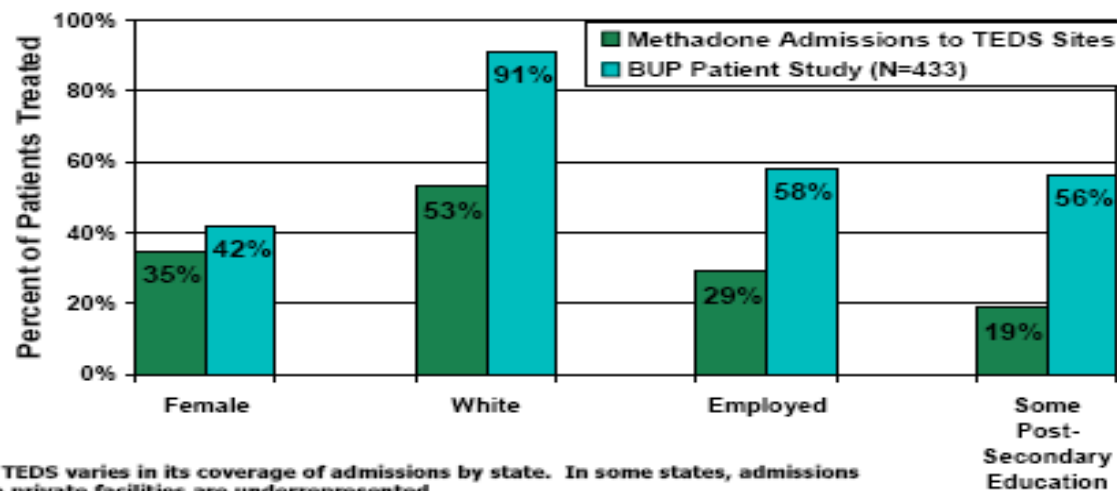
This paper documents a marked middle-aged white non-Hispanic between 1999 and 2013. This ch mortality and was unique to the saw a similar turnaround. The m to white non-Hispanics; black n and those aged 65 and above in ued to see mortality rates fall. accounted for by increasing deat ings, suicide, and chronic liver education groups saw increases ings, and an overall increase in ex education saw the most mark



OxyContin

NOW APPROVED FOR CHILDREN  
11 TO 17 YEARS OLD

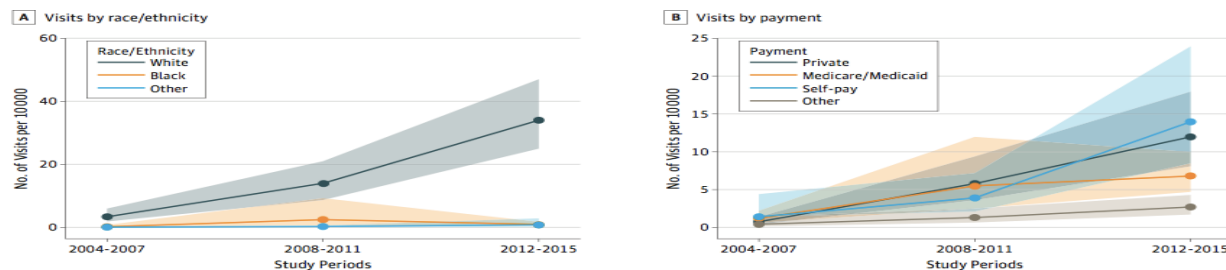
## Methadone Patients\* and BUP Patient Study Sample: Demographic Differences



SAMHSA/CESAT's Evaluation of the Buprenorphine Waiver Program 2002-2005

2005: Buprenorphine patients 91% White, 56% College  
2019: Whites get buprenorphine 3-4x as often as Blacks

Figure. Buprenorphine Visits by Race/Ethnicity and Payment Type, 2004-2015



Buprenorphine visits (n = 1369) and 95% CIs per 10 000 visits (shaded areas), grouped by year and stratified by race/ethnicity and payment type. Estimates account for complex survey design elements and are nationally representative.



## NEGRO COCAINE "FIENDS" ARE A NEW SOUTHERN MENACE

By Edward Huntington Williams.  
K. A.

F all these years there have been rumors about the harm in drug taking in the South—rumors, but always without reason that the addition to such drugs—morphine and cocaine was bringing a terrible curse to the colored

Murder and Insanity Increasing Among Lower Class Blacks Because They Have Taken to "Sniffing" Since Deprived of Whisky by Prohibition.

in Georgia, North Carolina, South Carolina, Mississippi, Tennessee, and West Virginia passed laws to prohibit the sale and use of whisky and the negro population. These laws do not, and were not intended to, prevent the white man from the well-to-do negro getting his accustomed beverages through legitimate channels. The negro population





# now she can cope...

thanks to

**Butisol**<sup>®</sup>  
(SODIUM BUTABARBITAL)

"daytime sedative" for  
everyday situational stress

When stress is situational—environmental pressure, worry over illness—the treatment often calls for an anxiety-allaying agent which has a prompt and predictable calming action and is remarkably well tolerated. Butisol, Sodium (sodium butabarbital) meets this therapeutic need.

After 30 years of clinical use... still a first choice among many physicians for dependability and economy in mild to moderate anxiety.

**Contraindications:** Porphyria or sensitivity to barbiturates.

**Precautions:** Exercise caution in moderate to severe hepatic disease. Elderly or debilitated patients may react with marked excitement or depression.



In the menopause...  
*transition without tears*



Milprem promptly relieves emotional distress  
with lasting control of physical symptoms

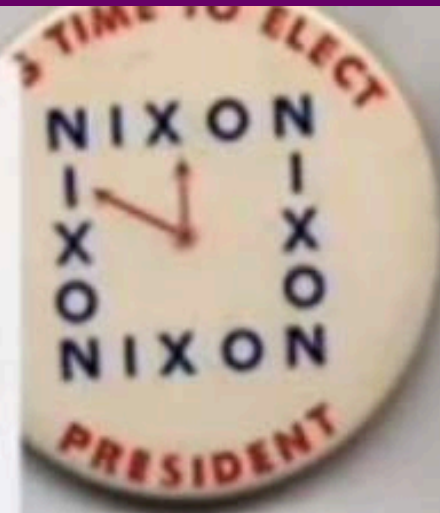
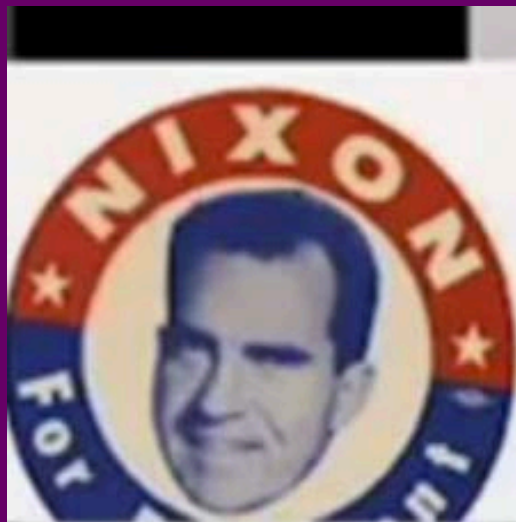
## Milprem

Milprem (meprobamate) is a sedative.

Supplied in two strengths for adult females:  
MILPREM-400, each round white tablet contains 400 mg. Meprobamate (meprobamate) and 0.4 mg. conjugated estrogens (inert);  
MILPREM-200, each round white tablet contains 200 mg.  
Meprobamate and 0.4 mg. conjugated estrogens (inert).  
Both strengths in bottles of 60.

*In minutes*, Milprem starts to ease anxiety and depression. It relieves insomnia, relaxes tense muscles, alleviates low back pain and tension headache. As the patient continues on Milprem, the replacement of estrogens checks hot flashes and other physical symptoms.

**Easy dosage schedule:** One Milprem tablet t.i.d. in 21-day courses with one-week rest periods; during the



Critics accuse Bush of spending too little, too late

## US unveils anti-drug strategy

**T**he White House unveiled a new anti-drug strategy on Monday, promising to take a more aggressive approach to fighting the drug trade. The strategy, which is part of a broader effort to combat crime, focuses on targeting drug traffickers and their networks. It also emphasizes the importance of community-based programs and law enforcement cooperation. The strategy is expected to be implemented over the next several years.





# MIKE'S STORY



**More to Watch:**

**Webisode #1**



**Webisode #3**





# Technologies of Whiteness

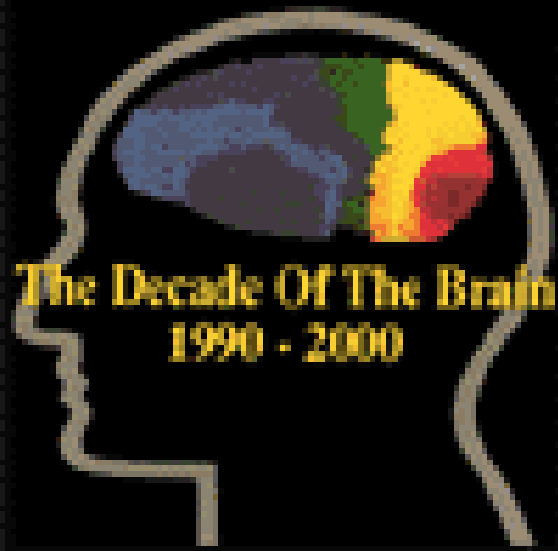
Addiction Neuroscience

New Biotechnologies

Regulatory Structures

Marketing





## Decade of

*By the President*

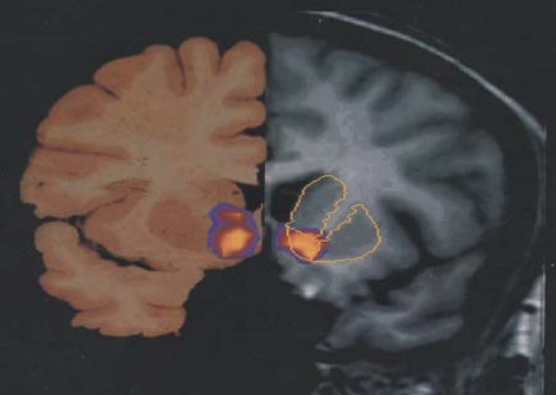
Al

The human brain, a 3-pound machine of activity, is one of the most magnificent organs in the body. The seat of human intelligence

## Neuron

Volume 19 Number 3

September 1997

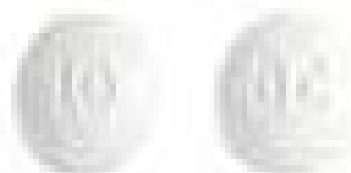


Dynamic Mapping of Circuits Activated by Cocaine  
in the Human Brain

# OxyCONTIN® II

(OXYCODONE HCl CONTROLLED-RELEASE) TABLETS

10 mg



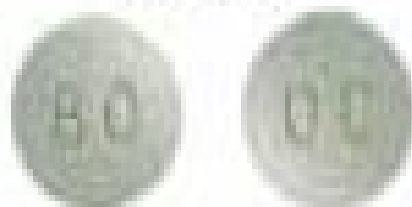
20 mg



40 mg



80 mg



160 mg



# H.R. 2634 (106<sup>th</sup>): Drug Addiction Treatment Act of 2000

Introduced: **Jul 29, 1999**

106<sup>th</sup> Congress, 1999–2000

Status: **Died in a previous Congress**

This bill was introduced in a previous session of Congress and was passed by the House on July 19, 2000 but was never passed by the Senate.

Sponsor:



**[Tom Bliley](#)**

Representative for Virginia's 7th congressional district

Republican

Text:




**[Read Text »](#)**

Last Updated: Jul 27, 2000

Length: 16 pages

Substance Abuse and Mental Health Services Administration



Search SAMHSA

Find Help

Topics

Programs & Campaigns

Grants

Data

Pr

Programs & Campaigns » Medication-Assisted Treatment » Training Materials and Resources » Buprenorphine

Medication-Assisted Treatment

Certification of Opioid Treatment Programs

Buprenorphine Waiver Management

Copyright of Accrediting

## Buprenorphine Training for Physicians

Find information about the eight-hour buprenorphine waiver training courses that are required for physicians to prescribe and dispense buprenorphine.

Under the Drug Addiction Treatment Act of 2000 (DATA 2000)

# Hooked: A teacher's addiction and the new face of heroin

Linda Carroll  
TODAY contributor

Apr. 8, 2014 at 7:47 AM



naabt.org

Print | Font Size v A ^

Search naabt.org

Search



## The National Alliance of Advocates for Buprenorphine Treatment

Buprenorphine (Suboxone®, Subutex®) is an opioid medication used to treat opioid addiction in the privacy of a physician's office.<sup>1</sup> Buprenorphine can be dispensed for take-home use, by prescription.<sup>1</sup> This, in addition to the pharmacological and safety profile of buprenorphine, makes it an attractive treatment for patients addicted to opioids.<sup>2</sup>

About Us

Find  
Buprenorphine  
Treatment

Buprenorphine  
Education

Online  
Support  
Communities

Info for  
Treatment  
Providers



### Patients: Find a Buprenorphine Physician

**Patient/Physician Matching System.**  
Have a certified buprenorphine  
prescribing physician contact you:

Get Started



### Physicians: Help Patients Now

**Patient/Physician Matching System.**  
Find patients searching for  
buprenorphine treatment near you:

Get Started





# Beyond Magic Bullets

- Racial Capital Drives Biotech and Pharma
- Magic Bullet Ideology can reinforce Structural Racism
- Invest in Innovative Structural, BioSocial Community-Based Approaches

# Structural drivers of social determinants of health

## **EXAMPLE 1 – HOUSING STRUCTURE:**

City and state zoning laws and development plans, predatory loans  
(displace low income residents, create shortages of affordable housing)

### **SOCIAL DETERMINANT:**

Insecure housing and homelessness

### **HEALTH OUTCOME:**

Insecure housing -> chronic disorders, rehospitalizations, comorbidities, arrests

## **EXAMPLE 2 - LEGAL STRUCTURE:**

Law enforcement and sentencing (varies by race, SES neighborhood)

### **SOCIAL DETERMINANT:**

Residence in targeted neighborhoods, legal involvement

### **HEALTH OUTCOME:**

Incarceration by race, SES -> poor psychiatric, infectious & chronic disease outcomes

# Structural Competencies

- *Recognizing the structures that shape clinical interactions*
- *Rearticulating “cultural” presentations in structural terms*
- *Observing and practicing structural intervention*
- *Developing Structural Humility (e.g. through collaborations)*

# In-clinic structural intervention

- Electronic Medical Records
- Medical-Legal Partnerships
- Social Prescribing
- Peer/Community Health Workers

## Non Health Sector Collaborations

Housing, Legal Aid, Schools, Cultural Arts, Urban Planning

### PROJECTS

### NEW YORK

#### **The Brownsville Partnership**

**A Community Approach to Ending Homelessness before It Begins**

It's an unlikely alliance: the former NBA player working to fix his troubled neighborhood and the young woman wielding flow charts on how to get there. Greg Jackson and Corinne LeTourneau are part of the Brownsville Partnership (BP), a multi-agency collaborative launched in 2008 to prevent families in this Brooklyn public housing neighborhood from losing





# Community Partnerships

**MEDICATION  
ASSISTED  
TREATMENT  
(MAT)  
IS A SAFE  
TOOL**



**TO HELP YOU  
STOP USING  
OPIOIDS LIKE  
PRESCRIPTION  
PAIN  
MEDICATIONS  
AND HEROIN.**

**AMERICAN INDIANS  
AND ALASKA NATIVES  
CAN USE MAT IN  
COMBINATION  
WITH CULTURAL  
ACTIVITIES AND  
COUNSELING**



**TO HEAL FROM  
OPIOID USE  
DISORDER.  
TALK TO YOUR  
HEALTH  
PROFESSIONAL  
TODAY.**

**TREATMENT IS  
AVAILABLE  
AND RECOVERY  
IS POSSIBLE.**



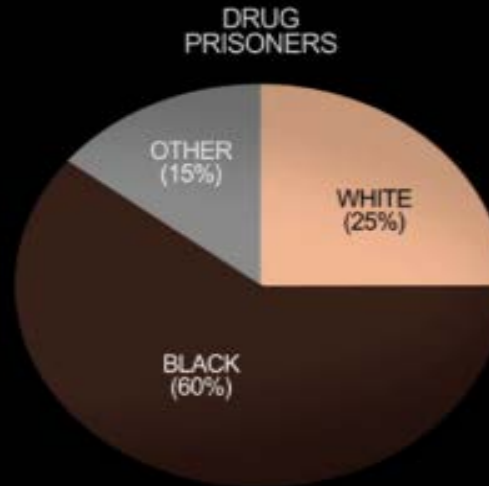
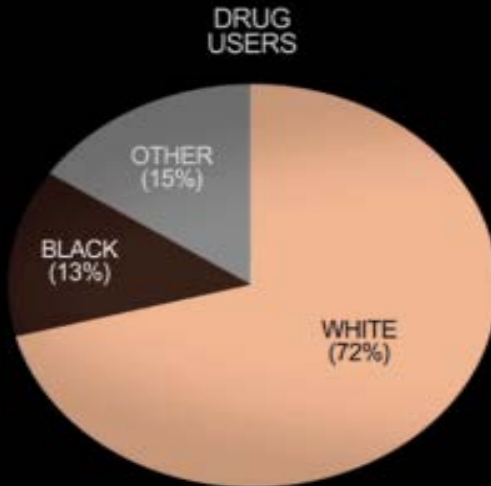
**FOR INFORMATION  
ABOUT CARRYING  
NALOXONE OR ABOUT  
OPIOID USE  
DISORDER TREATMENT  
OPTIONS, TALK TO YOUR  
PRIMARY CARE PROVIDER  
OR CONTACT:**



**IMANI  
BREAK  
Through**



# Policy Advocacy



From  
to **PUNISHMENT**  
**PUBLIC HEALTH**  
*Capabilities for a New Ecology of Justice*



[Home](#) [Steering Committee Members](#) [Policy Innovation Teams](#) [Academy Groups and Events](#) [Conferences & Events](#)

## 2014 SPRING CONFERENCE

**Decarceration: A Public Health Approach to Reentry**  
First Annual Conference on *From Punishment to Public Health* (P2PH)

[REGISTER HERE](#)

P2PH Academy Conference Outline  
Wednesday, April 23rd, 2014  
Moot Court Room (Rm. 668) at John Jay College

# STRUCTURAL COMPETENCY

NEW MEDICINE FOR INEQUALITIES THAT ARE MAKING US SICK

Interested in setting up Structural  
Competency training or joining the

 Follow ...

[structuralcompetency.org](https://structuralcompetency.org)